

CITY STONE PAVERS



Concrete Pavers • Stone Pavers • Tiles • Garden Walls & Edging
Retaining Walls • Concrete Sleepers • Concrete Blocks • Wall Cladding

CITY STONE PAVERS



BEST PRICE 
promise

FEATURES

- Textured finish
- Slip resistant
- Hardwearing and durable
- Free samples available

SUITABLE FOR

- Pools and pool surrounds
- Entertaining areas
- Courtyards and patios
- Garden paths
- Stepping stones



Specifications	Size	No. per m ²	Weight per m ²	m ² per pallet
Pavers	600 x 300 x 40mm	5.55	96kg	17.28

COLOUR RANGE*

Limestone



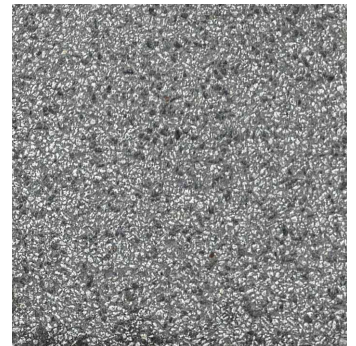
Grey



Pearl



Charcoal



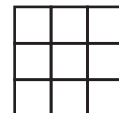
*Due to natural resources used in production there are slight colour variations between batches. Pool copings can differ in appearance to the body tile and mixing 2 different sizes can end up with slight variations. Colour swatches are a guide only. Samples you receive may also be slightly different to what is received. Pavers should be laid with approximately 2-3mm gap due to thickness variation. Must be laid on soft sand base. This product has a V2 Variance rating.



www.australianpaving.com.au

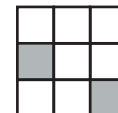
  **australianpavingcentre**

UNIFORM APPEARANCE



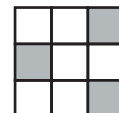
V1

SLIGHT APPEARANCE



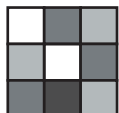
V2

MODERATE APPEARANCE



V3

SUBSTANTIAL APPEARANCE



V4