

COASTAL STONE 800 X 400



Concrete Pavers • Stone Pavers • Tiles • Garden Walls & Edging
Retaining Walls • Concrete Sleepers • Concrete Blocks • Wall Cladding

COASTAL STONE 800 X 400



FEATURES

- Textured surface
- Salt resistant
- Slip resistant
- Durable and hardwearing
- Free samples available

SUITABLE FOR

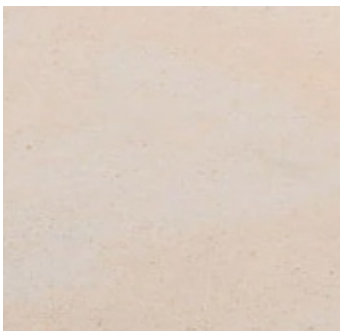
- Entertaining areas
- Patios and alfresco
- Courtyards
- Garden paths and walkways
- Stepping stones



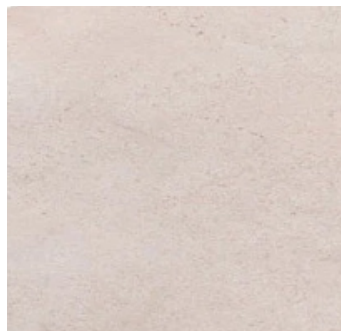
Specifications	Size	No. per m ²	Weight per m ²	m ² per pallet
Paver	800 x 400 x 40mm	3.13	95.2kg	14.38

COLOUR RANGE*

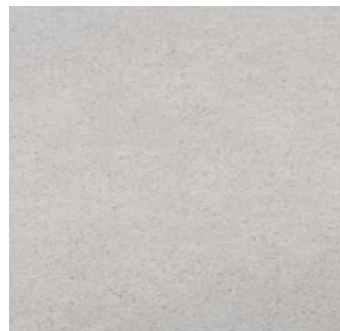
Chalk



Smoke



Steel



Bluestone



*Due to natural resources used in production there are slight colour variations between batches. Pool copings can differ in appearance to the body tile and mixing 2 different sizes can end up with slight variations. Colour swatches are a guide only. Samples you receive may also be slightly different to what is received. Coastal Stone pavers should be laid with approximately 2-3mm gap due to thickness variation. Must be laid on soft sand base. This product has a V2 Variance rating.



www.australianpaving.com.au

  [australianpavingcentre](https://www.instagram.com/australianpavingcentre)

