

COURTYARD PAVER



Concrete Pavers • Stone Pavers • Tiles • Garden Walls & Edging
Retaining Walls • Concrete Sleepers • Concrete Blocks • Wall Cladding

COURTYARD PAVER



FEATURES

- Multi purpose pavers
- Durable and easy to install
- Traditional smooth texture
- Free samples available

SUITABLE FOR

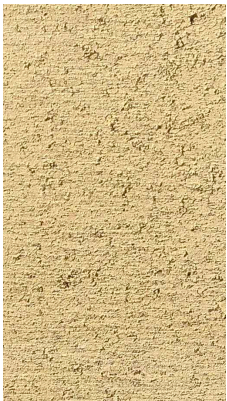
- Driveway safe (50mm only)
- Courtyards and patios
- Entertaining areas
- Garden paths and stepping stones



Specifications	Size	No. per m ²	Weight per m ²	m ² per pallet
Courtyard Paver	300 x 300 x 40mm	11.1	85kg	17.29
Courtyard Paver	300 x 300 x 50mm	11.1	109kg	12.97

COLOUR RANGE*

Oatmeal



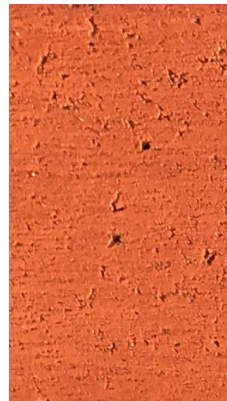
Sunstone



Salmon



Terracotta



Steel



Charcoal



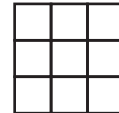
*Colours are an indication only. Always sight physical product colour samples before purchase.



www.australianpaving.com.au

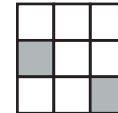
[australianpavingcentre](#)

UNIFORM APPEARANCE



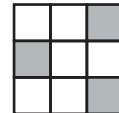
V1

SLIGHT APPEARANCE



V2

MODERATE APPEARANCE



V3

SUBSTANTIAL APPEARANCE



V4