



Concrete Pavers • Stone Pavers • Tiles • Garden Walls & Edging  
Retaining Walls • Concrete Sleepers • Concrete Blocks • Wall Cladding

# STRADAPAVE®



**BEST PRICE** >>>  
promise

## FEATURES

- Affordable DIY paver
- Versatile
- Slip resistant
- Free samples available

## SUITABLE FOR

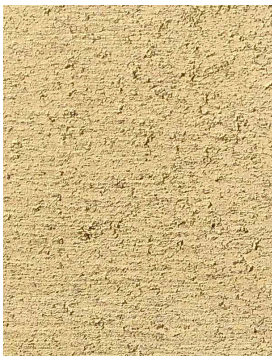
- Driveways\*
  - Patios and alfresco
  - Garden paths and footpaths
- \*Stradapave® 50mm only



Specifications	Size	No. per m <sup>2</sup>	Weight per m <sup>2</sup>	m <sup>2</sup> per pallet
Stradapave®	300 x 300 x 40mm	11.1	85kg	17.29
Stradapave®	300 x 300 x 50mm	11.1	109kg	12.97
Bullnose	300 x 300 x 50mm	N/A	109kg	144 units

## COLOUR RANGE\*

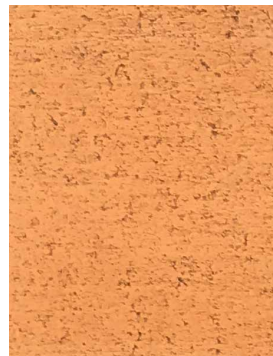
Oatmeal



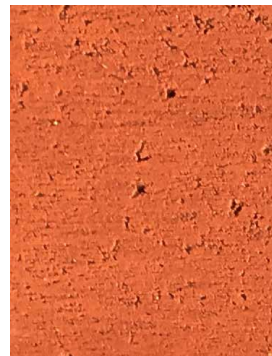
Sunstone



Salmon



Terracotta



Charcoal



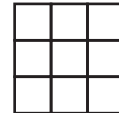
\*Colours are an indication only. Always sight physical product colour samples before purchase.



[www.australianpaving.com.au](http://www.australianpaving.com.au)

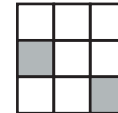
  **australianpavingcentre**

UNIFORM  
APPEARANCE



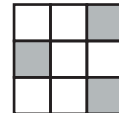
**V1**

SLIGHT  
APPEARANCE



**V2**

MODERATE  
APPEARANCE



**V3**

SUBSTANTIAL  
APPEARANCE



**V4**